

# urban

NATURE



# urban

NATURE



**38**

GRIFFITH

STYLE: UN1011



**39**

GRIFFITH  
LADY

STYLE: UN2011



**40**

HARRINGTON

STYLE: UN1012



**41**

HARRINGTON  
LADY

STYLE: UN2012



**42**

HARVARD

STYLE: UN1013



**43**

HARVARD  
LADY

STYLE: UN2013



**44**

BERKELEY

STYLE: UN1014



**45**

BERKELEY  
LADY

STYLE: UN2014



**46**  
WARNER  
STYLE: UN1015



**54**  
PRINCETON  
STYLE: UN1003



**62**  
BOND VEST  
MEN  
STYLE: UN7001



**47**  
WARNER  
LADY  
STYLE: UN2015  
STYLE: UN2015L



**55**  
PRINCETON  
LADY  
STYLE: UN2003



**63**  
BOND VEST  
LADY  
STYLE: UN7001L



**48**  
RADFORD  
STYLE: UN1009



**56**  
CAMBRIDGE  
STYLE: UN1004



**64**  
BOND PULL-  
OVER MEN  
STYLE: UN7002



**49**  
RADFORD  
LADY  
STYLE: UN2009



**57**  
CAMBRIDGE  
LADY  
STYLE: UN2004



**65**  
BOND  
CARDIGAN  
STYLE: UN7003



**50**  
MACQUARIE  
STYLE: UN1010



**58**  
HAMPTON  
STYLE: UN1006



**51**  
MACQUARIE  
LADY  
STYLE: UN2010



**59**  
HAMPTON  
LADY  
STYLE: UN2006



**52**  
MONASH  
STYLE: UN1001



**60**  
BELMONT  
STYLE: UN1007



**53**  
MONASH  
LADY  
STYLE: UN2001



**61**  
BELMONT  
LADY  
STYLE: UN2007



# GRIFFITH

STYLE: UN1011

What an addition to the Urban Nature range!  
This fabric carries a textured vertical stripe  
and is bound to be a winner in all areas of  
commerce.

In this version of CVC (Cotton Value  
Content- with a cotton rich 55%-45%  
polyester), the textured vertical stripe gives  
another visual dimension.

This fabric is ideal for easy care with a  
minimum of maintenance.

A pocket features on the left chest.

Sizes XS-3XL+5XL+7XL

Chambray Blue





## GRIFFITH LADY

STYLE: UN2011

Matching 100% to the mens shirt, this ladies style matches the  $\frac{3}{4}$  sleeve style shown in all of our existing ladies styles.

Bust and waist darts tailor this garment for the best fit and a generous cuff makes for a complete addition to the working woman's wardrobe.

This fabric is ideal for easy care with a minimum of maintenance.

Sizes 6-26

Chambray Blue

$\frac{3}{4}$  Sleeve

# HARRINGTON

STYLE: UN1012

Using a Navy base, this striped shirt has the ability to dress up your corporate wardrobe. Another shirt in a CVC fabric and with the lack of maintenance across all of the CVC fabrics is a major plus for the busy working man.

Don't spend your time ironing, a quick lick with the iron is all you will need!

A pocket features on the left chest.

Sizes XS-3XL+5XL+7XL

Navy Stripe





## HARRINGTON LADY

STYLE: UN2012

This striped shirt has already been picked to be a winner. Ladies, don't spend your time ironing, a quick run over with the iron is all you will need to look smart and fresh for the day.

Following the Urban Nature tradition, this ladies shirt features bust and waist darts for that tailored feminine touch.

Sizes 6-26

Navy Stripe

$\frac{3}{4}$  Sleeve

# HARVARD

STYLE: UN1013

With a raised textured vertical stripe, this navy shirt redefines the corporate boundary. The advantage for corporate wear is the entire mens range is available for all body shapes and sizes, with shirts being available from S-3XL+5XL+7XL. 45% of the fabric in this CVC range is polyester which makes your daily maintenance less of a chore. A pocket features on the left chest. Sizes XS-3XL+5XL+7XL  
Navy Self Stripe



# HARVARD LADY

STYLE: UN2013

Following the Urban Nature tradition, this ladies shirt features bust and waist darts for that tailored feminine touch.

Combine this with a modern textured fabric in a self stripe with care free maintenance and you've picked another stylish corporate winner.

Sizes 6-26

Navy Self Stripe

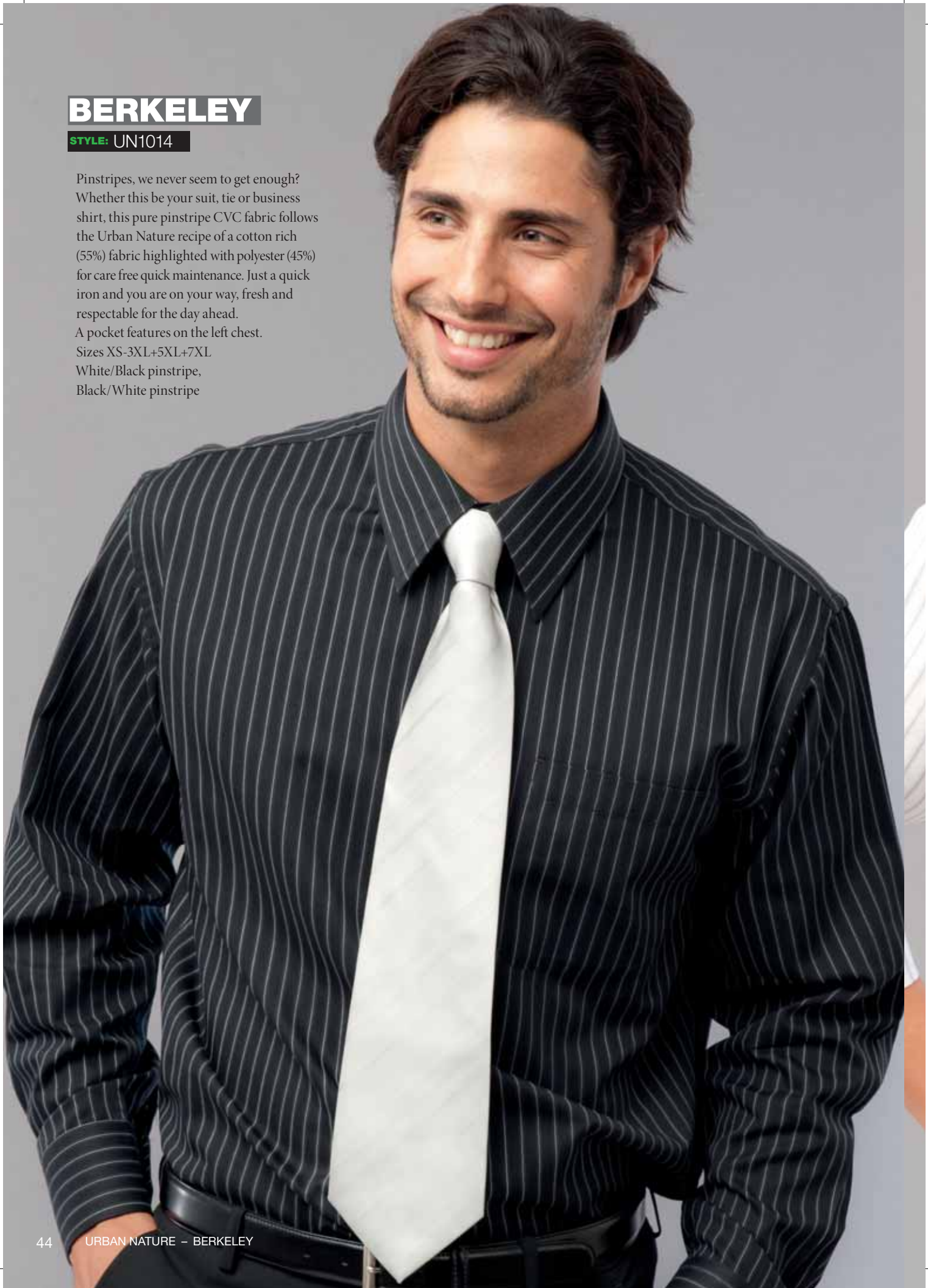
$\frac{3}{4}$  Sleeve



# BERKELEY

STYLE: UN1014

Pinstripes, we never seem to get enough? Whether this be your suit, tie or business shirt, this pure pinstripe CVC fabric follows the Urban Nature recipe of a cotton rich (55%) fabric highlighted with polyester (45%) for care free quick maintenance. Just a quick iron and you are on your way, fresh and respectable for the day ahead. A pocket features on the left chest. Sizes XS-3XL+5XL+7XL  
White/Black pinstripe,  
Black/White pinstripe





## BERKELEY LADY

STYLE: UN2014

What better way to get that taller look with this new pinstripe fabric, following our tried and true Urban Nature cotton rich (55%) fabric but with the added maintenance of the feature of polyester (45%) for easy day to day wear.

Tailored bust and waist darts finish this new ladies shirt.

Sizes 6-26

White/Black pinstripe,  
Black/White pinstripe

A man with dark hair and a light beard is wearing a white long-sleeved shirt with a pocket on the left chest and a green and white striped tie. He is looking towards the camera with a slight smile. The background is a plain, light grey color.

**WARNER**

**STYLE:** UN1015

For 2009.10, we've introduced another raised textured vertical stripe. Fabrics and textures are becoming the catch phrase when discussing corporate apparel and the need to be different.

Stand out from everyone else with these two new superb CVC fabric shirts in the Warner range .

A pocket features on the left chest.

Sizes XS-3XL+5XL+7XL

White, Black

## WARNER LADY

STYLE: UN2015 - 3/4 SLEEVE

Here is another stylish winner, forget shirting from the nineties, set yourself apart in this stylish version that encapsulates where you want to be in the corporate round-about. Cotton rich (55%) but with the added maintenance of the feature of polyester (45%) for easy day to day wear. Tailored bust and waist darts finish this ladies shirt.

Sizes 6-26

White, Black

¾ Sleeve & Long Sleeve



STYLE: UN2015L LONG SLEEVE

# RADFORD

STYLE: UN1009

Bold yet discreet, the striping on this shirt says how important imaging is in today's corporate world.

A comfortable and lightweight CVC fabric is used, a rich 55% cotton and 45% polyester ideal for minimum maintenance.

A pocket features on the left chest.

Sizes XS-3XL+5XL+7XL

Light Blue with white stripe

Long Sleeve



Light Blue with white stripe

# RADFORD LADY

STYLE: UN2009

We include the Radford Lady in a comfortable  $\frac{3}{4}$  sleeve design. The Radford has been a best selling mens shirt and by popular demand, we have introduced a ladies style with fabric again being the key. Comfort has been taken into account with strategically placed bust and waist darts and generous cuff.

Sizes 6-26

Light Blue with white stripe  
 $\frac{3}{4}$  sleeve



Light Blue with white stripe

# MACQUARIE

STYLE: UN1010

A name synonymous with Australia and a shirt synonymous with high quality and good looks.

In this version of CVC fabric, a textured outer surface is intersected with blue and white boxes to give another visual dimension.

We've used, a rich 55% cotton and 45% polyester ideal for minimum maintenance.

A pocket features on the left chest.

Sizes XS-3XL+5XL+7XL

White with a light blue check

Long Sleeve



White with a light blue check

# MACQUARIE LADY

STYLE: UN2010

As in the Mens shirt, this version of CVC fabric has a textured outer surface that is intersected with blue and white boxes. We've used the same rich 55% cotton and 45% polyester fabric for the most minimum maintenance.

Bust and waist darts with a generous cuff on the  $\frac{3}{4}$  sleeve make for a comfortable addition to your corporate wardrobe.

Sizes 6-26

White with a light blue check  
 $\frac{3}{4}$  sleeve

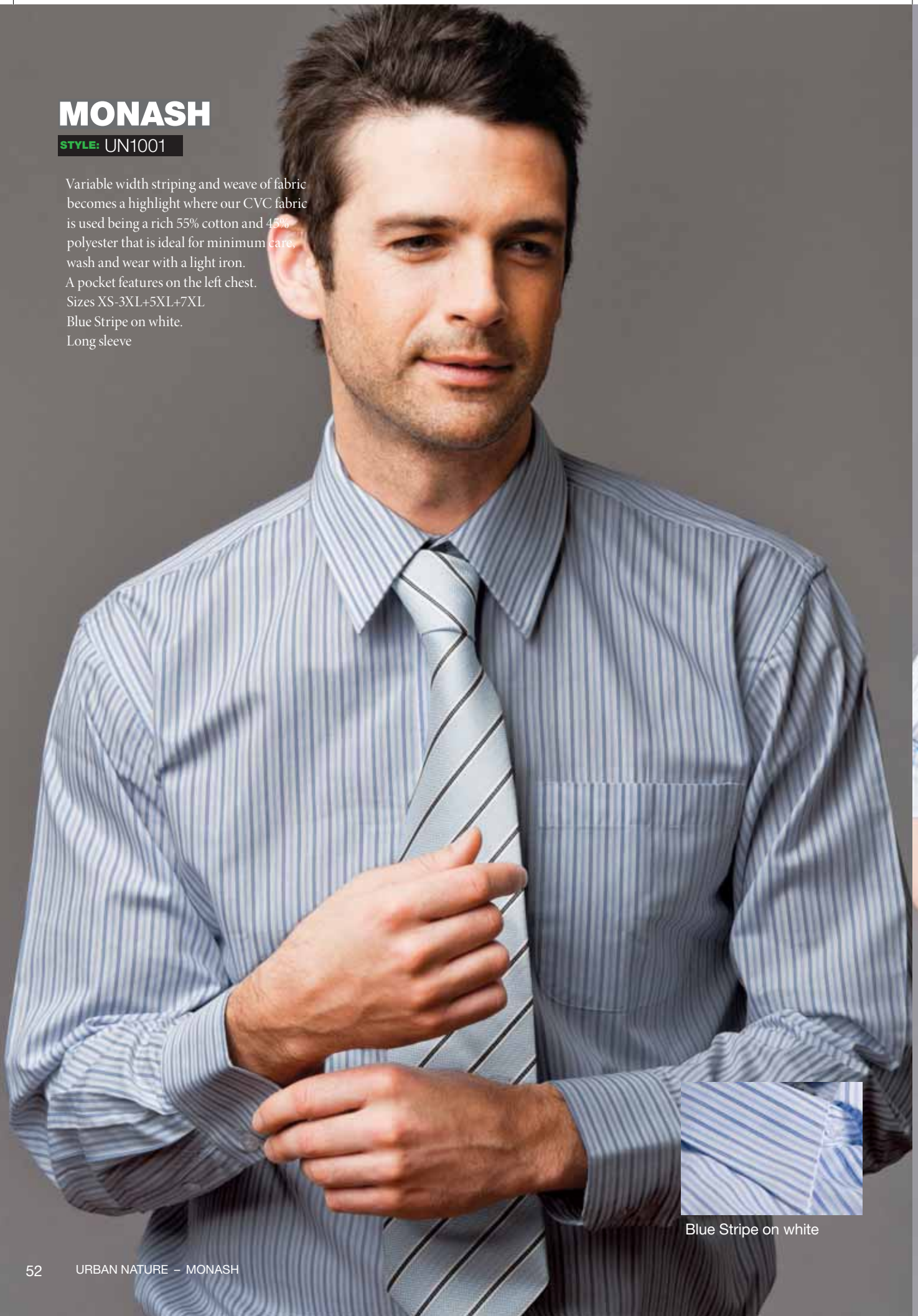


White with a light blue check

# MONASH

STYLE: UN1001

Variable width striping and weave of fabric becomes a highlight where our CVC fabric is used being a rich 55% cotton and 45% polyester that is ideal for minimum care, wash and wear with a light iron. A pocket features on the left chest. Sizes XS-3XL+5XL+7XL  
Blue Stripe on white.  
Long sleeve



Blue Stripe on white

# MONASH LADY

STYLE: UN2001

Comfort has been taken into account with all our ladies shirting featuring strategically placed bust and waist darts and generous cuff.

The striping is quite subtle, certainly not loud or brash.

Sizes 6-26

Blue Stripe on white.

$\frac{3}{4}$  sleeve



Blue Stripe on white

# PRINCETON

STYLE: UN1003

Our 55% cotton rich and 45% polyester CVC fabric is woven to give you an engineered stripe.

The fabric highlights the stripes, the lime stripe in particular has been a best seller when your image is that of 'going green'.

A light iron is all that is needed, ideal for minimum care, wash and wear.

A pocket features on the left chest.

Sizes XS-3XL+5XL+7XL

Lime Stripe & Blue Stripe

Long sleeve



Lime Stripe

Blue Stripe

# PRINCETON LADY

STYLE: UN2003

Pick a colour, any colour, femininity in pink, 'go green' in lime or dress up in blue, these candy striped shirts feature well placed bust and waist darts and a generous cuff turn back.

Whilst the striping is uniformed, the weave is quite unique and the colours give you many options

Sizes 6-26

Lime Stripe & Blue Stripe,  
¾ sleeve



Lime Stripe



Blue Stripe

# CAMBRIDGE

STYLE: UN1004

Light weight and fashionable, a European look that is Australian. This 55% cotton rich and 45% polyester CVC fabric is woven to give you fulltime comfort.

The variegated stripes give a hint of Europe and with this fabric, a light iron is all that is needed.

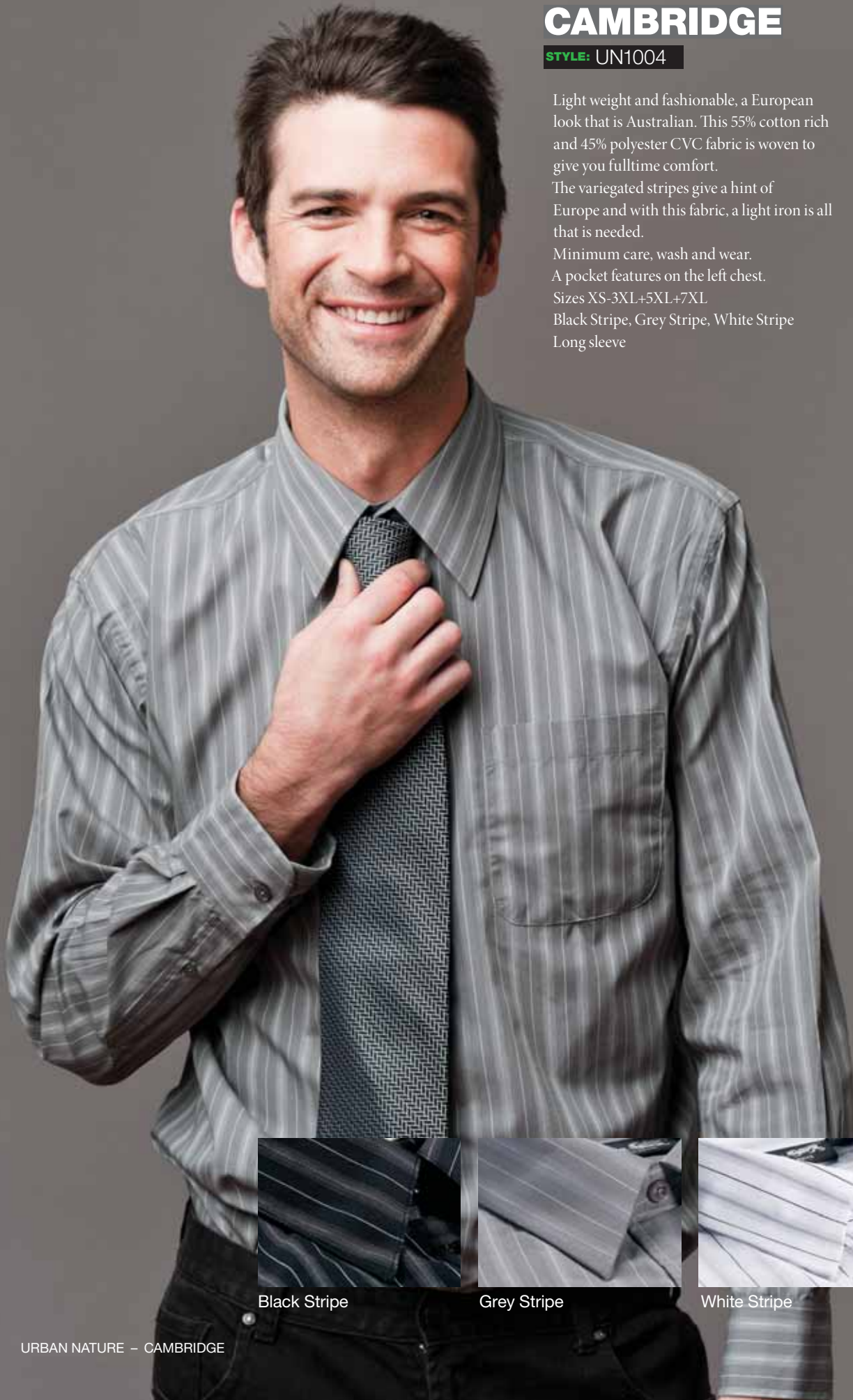
Minimum care, wash and wear.

A pocket features on the left chest.

Sizes XS-3XL+5XL+7XL

Black Stripe, Grey Stripe, White Stripe

Long sleeve



Black Stripe

Grey Stripe

White Stripe

# CAMBRIDGE LADY

STYLE: UN2004

Excellent to wear, great to look at, the variegated stripes give a hint of Europe and with this fabric, a light iron is all that is needed. This 55% cotton rich and 45% polyester CVC fabric is woven to give you fulltime comfort and feature well placed bust and waist darts and a generous cuff turn back. Minimum care, wash and wear.  
Sizes 6-26  
Black Stripe, Grey Stripe, White Stripe  
¾ sleeve



Black Stripe

Grey Stripe

White Stripe

# HAMPTON

STYLE: UN1006

This 55% cotton rich and 45% polyester woven CVC fabric's colours feature tones that complement each other with the sky and navy stripes on white or the royal and charcoal striping on black. A light iron is all that is needed for minimum care, wash and wear. A pocket features on the left chest. Sizes XS-3XL+5XL+7XL  
Black Stripe, White Stripe  
Long sleeve



Black Stripe



White Stripe

# HAMPTON LADY

STYLE: UN2006

This uniformed stripe pattern is flattering and can be dressed up or down to suit your accessories. The dark colour also adds to taller and slimmer image with the inclusion of bust and waist darts and a generous cuff turn back.

Sizes 6-26

Black Stripe, White Stripe

$\frac{3}{4}$  sleeve



Black Stripe



White Stripe

# BELMONT

STYLE: UN1007

Sexy and smart corporate wear is the best description for these stretch fabric shirts. We have gone for a subtle but effective contrast embroidered stitching to the inside neck and inside cuff that is easily seen when turned back. Flattering spandex also gives you day long comfort.

The inclusion of the bust and waist darts with generous cuff turn back sets this feminine shirt apart from others. On the men's shirt a pocket features on the left chest.

Men's Long sleeve

Men's Sizes XS-3XL+5XL+7XL

White, Black, Skyway Blue, Olympic Blue, Ultramarine, Neutral Grey, Lilac Rose.

Ladies Sizes 6-26

Ladies ¾ sleeve

\* Available in Ladies shirts only.



White



Black



Skyway Blue



Olympic Blue

# BELMONT LADY

STYLE: UN2007



Ultramarina



Neutral Grey



Lilac Rose

Available in Ladies shirts only.

# BOND VEST MEN

STYLE: UN7001

Not shaken or stirred but full office comfort in this new release from Urban Nature.

No need to worry about the chilly winter or a cold air con. anymore with this 50% wool /50% acrylic blend knitted sleeveless vest.

Sizes S-3XL

Black or Navy



Black



Navy

SIZES	S	M	L	XL	XXL	3XL
CM	51	54	57	60	63	66

variations +/- 1 cm

# BOND VEST LADY

STYLE: UN7001L

Not to be segregated, the ladies in the office can choose their own version of the sleeveless vest. In keeping with the contemporary styling of Urban Nature as a range, we've given this model a slightly deeper 'vee' to encompass the style you want to wear at work.

This fitted ladies vest is also a 50% wool / 50% acrylic blend.

Sizes S-3XL

Black or Navy



SIZES	S	M	L	XL	XXL	3XL
CM	41	45	49	53	57	61

variations +/- 1 cm



Black



Navy

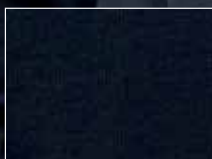
# BOND PULLOVER MEN

**STYLE:** UN7002

With these long sleeves, you won't be either shaken or stirred but will have full comfort in this new release for 2009.10. This 50% wool /50% acrylic blend knit mirrors the Urban Nature vests and cardigans so your whole office can utilise the same colour, look and feel, for total togetherness.

Sizes S-3XL

Black or Navy



Black



Navy

SIZES	S	M	L	XL	XXL	3XL
CM	51	54	57	60	63	66

variations +/- 1 cm

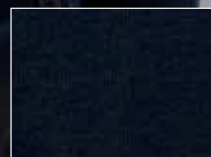
# BOND CARDIGAN LADY

STYLE: UN7003

All of the ladies in the office can now choose their own winter or air con. comfort with this stylish new cardigan. Regardless of your size or shape, we've got you covered for stylish good looks and ultimate comfort, even after work is done and you're havin' fun. This cardigan is also a 50% wool /50% acrylic blend.  
Sizes S-3XL  
Black or Navy

SIZES	S	M	L	XL	XXL	3XL
CM	42	46	50	54	58	62

variations +/- 1 cm



Black



Navy